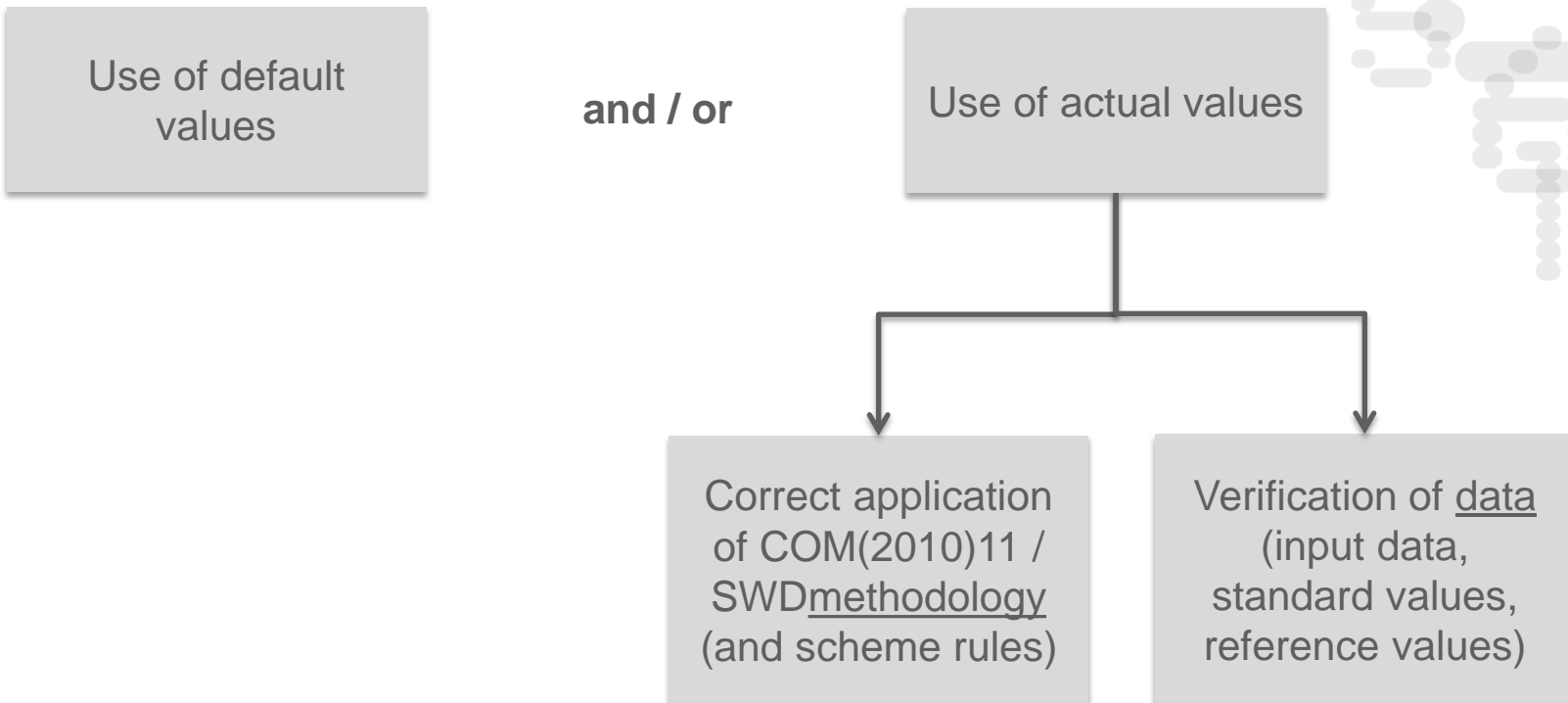


Block 2: Verification of actual calculations

Elements of a verification



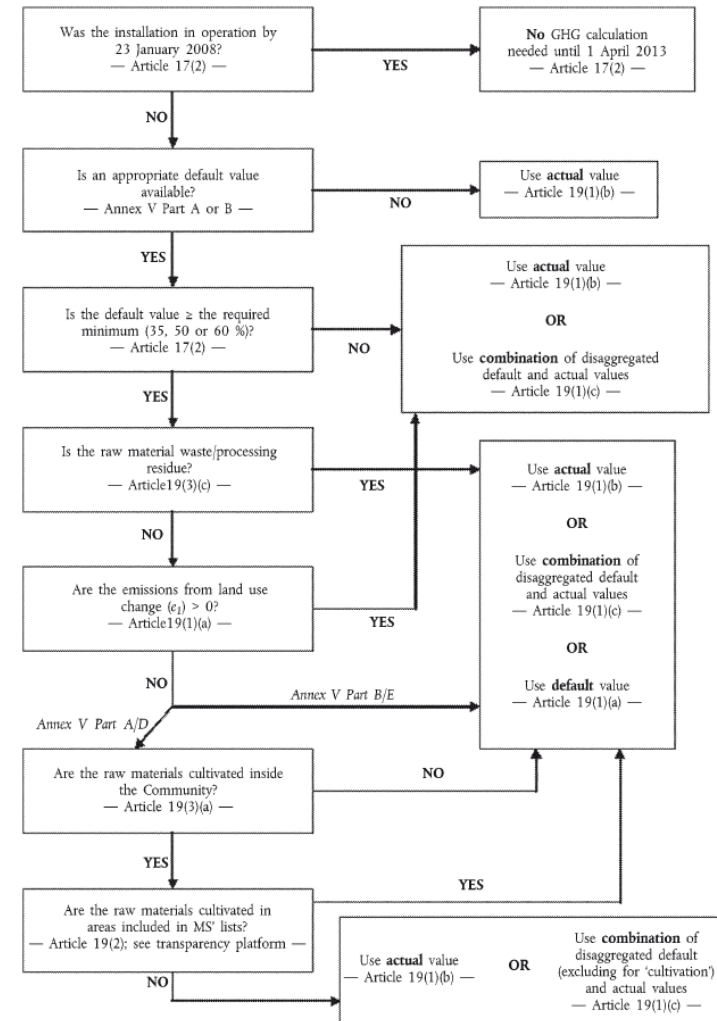
Verification of the use of actual vs. default values

When verifying the use of default values, a verifier should:

1. Check whether correct default value has been used
2. Check: Is it allowed to use a default value?

(Use decision tree from Communication on practical application...)

Methods for calculating the greenhouse gas impact



Verification of actual calculations

The COM(2010)11 methodology has to be applied correctly

1. When using recognised schemes / tools, the correct implementation of the methodology is guaranteed
2. If calculations are made with non-recognized tools / other means (e.g. spreadsheets), the correct application of the methodology has to be checked
3. If tools (recognized or not) offer possibilities to implement changes, compliance with the COM / SWD methodology and schemes rules has to be checked (e.g. BioGrace)

Verification of actual calculations

How to deal with **definition gaps** in the COM / SWD methodology

1. Some are tackled in the calculation rules
 1. definition of “defined region” for grid electricity mixes (national mixes in BioGrace)
 2. cut-off criteria for chemicals etc.
2. Some are not yet addressed:
 1. Definition of ‘degraded land’ for bonus
 2. Clear definition of co-product and waste (e.g. fatty acids, jatropha cake)

Verification of actual calculations

All **data / numbers** have to be correct

1. Check whether input data used in the calculation is supported by evidence (documentation)
2. Check whether correct standard values have been used,
 - either as defined by the scheme, or
 - user defined standard values (incl. evidence/documentation).This includes checking the correct global warming potentials (1, 25, 298)
3. Check whether correct numbers for the reference process have been used
(As defined in the SWD)
4. Check whether the calculation is correct
(no calculation errors leading to incorrect outcomes have been made)
5. Complementary calculations may be necessary for converting data into the right units

Thank you for your attention



Supported by

I N T E L L I G E N T E N E R G Y
E U R O P E 

The sole responsibility for the content of this presentation lies with the authors. It does not necessarily reflect the opinion of the European Union. Neither the EACI nor the European Commission are responsible for any use that may be made of the information contained therein.